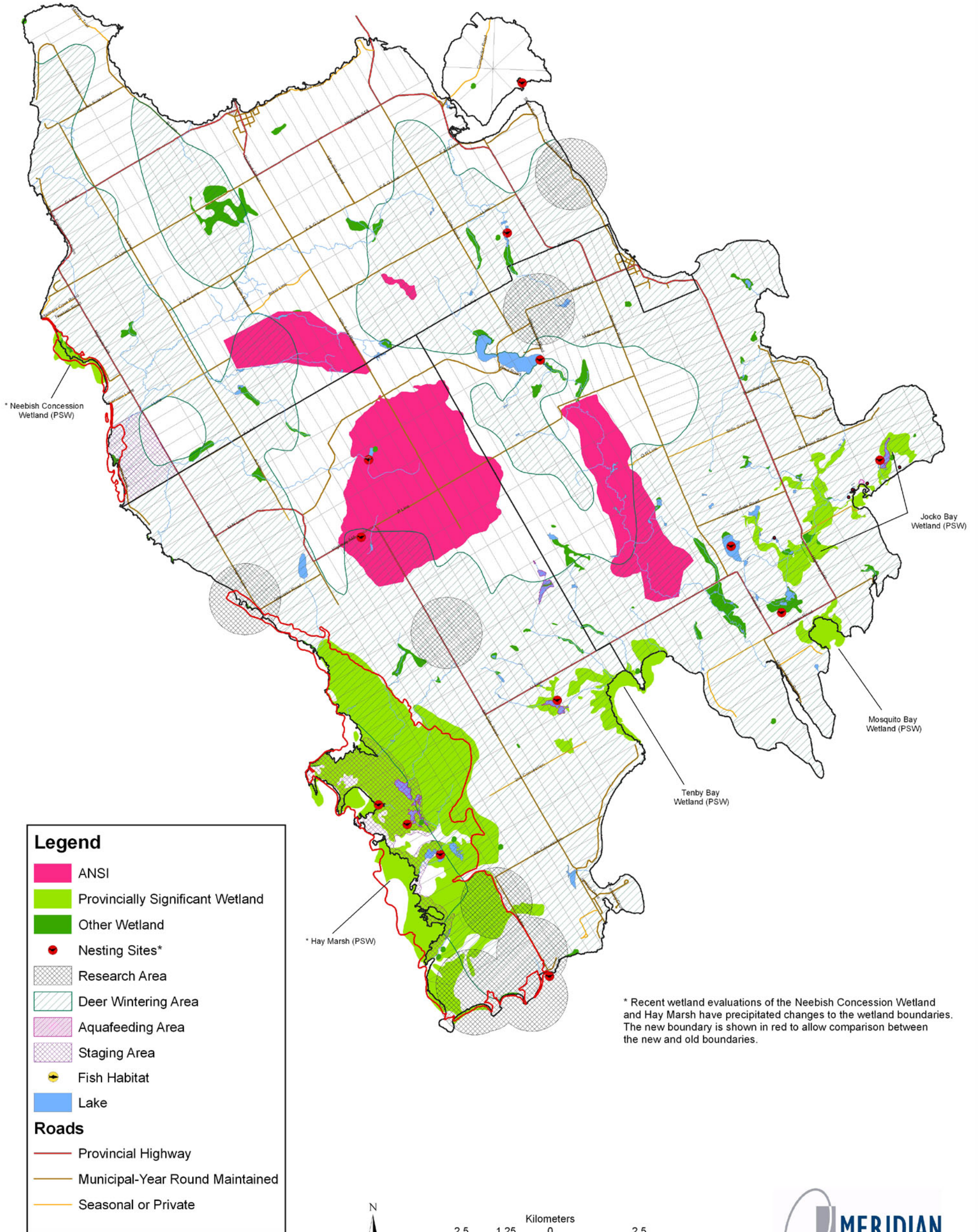


# St. Joseph Island Official Plan Schedule "B" - Environmental Features



**Legend**

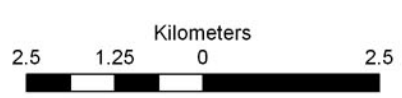
- ANSI
- Provincially Significant Wetland
- Other Wetland
- Nesting Sites\*
- Research Area
- Deer Wintering Area
- Aquafeeding Area
- Staging Area
- Fish Habitat
- Lake

**Roads**

- Provincial Highway
- Municipal-Year Round Maintained
- Seasonal or Private

\* Sensitive Nesting Sites Not Shown

Source: MNR NRVIS Data System, April, 2003



\* Recent wetland evaluations of the Neebish Concession Wetland and Hay Marsh have precipitated changes to the wetland boundaries. The new boundary is shown in red to allow comparison between the new and old boundaries.