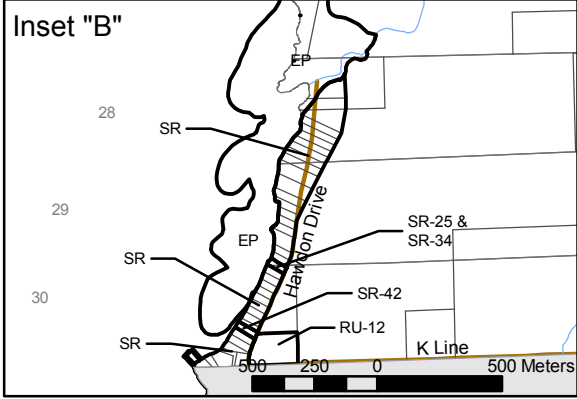
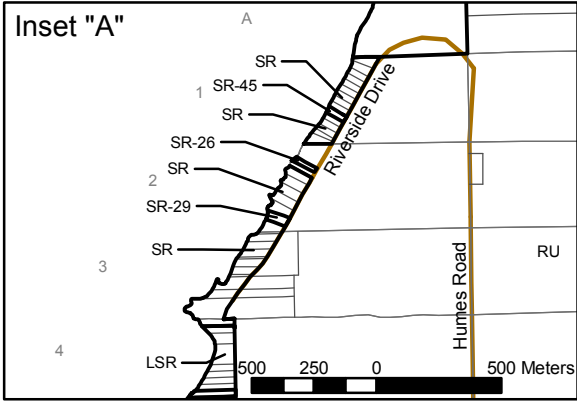
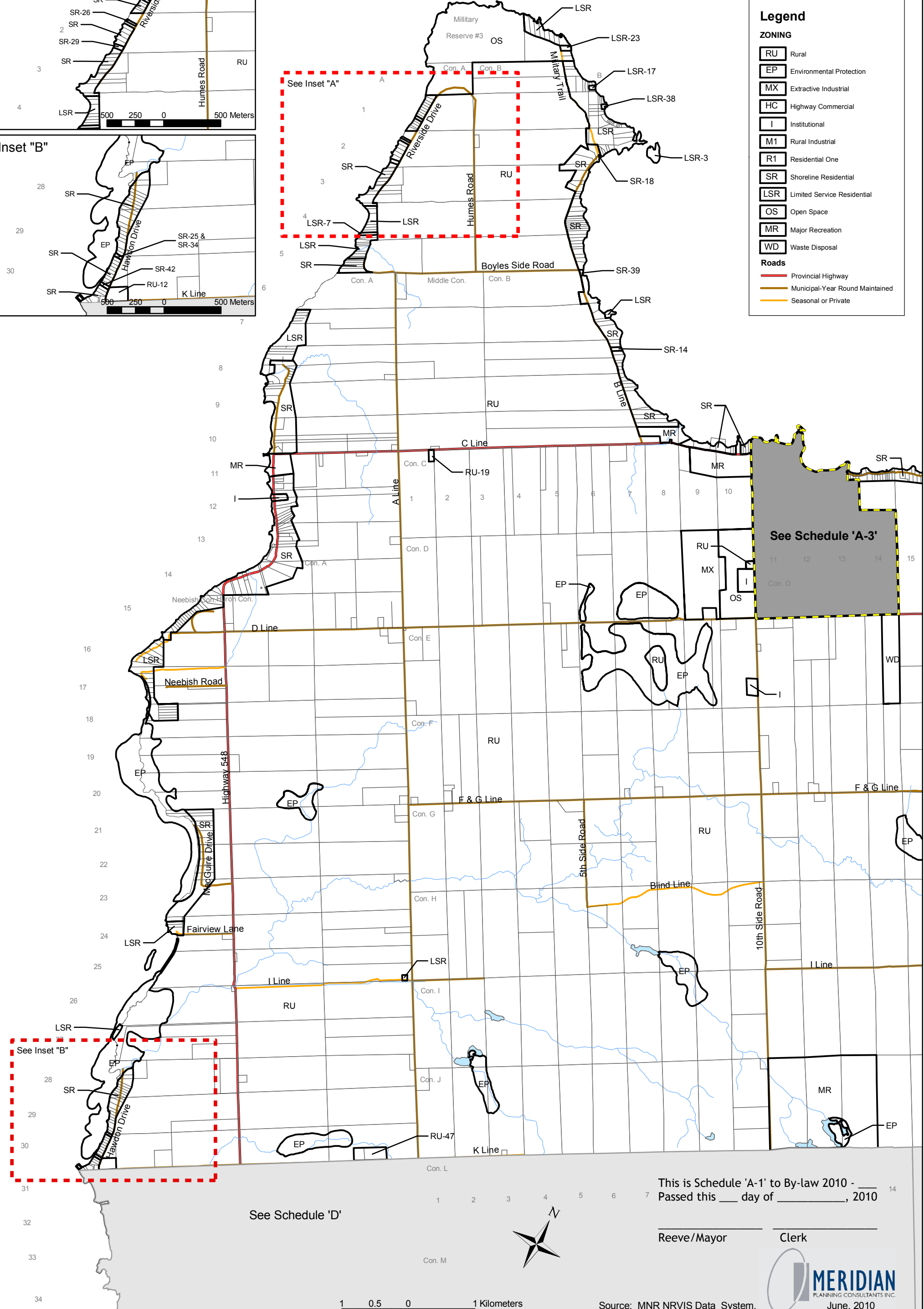


# St. Joseph Island Zoning Bylaw Township of St. Joseph Schedule 'A-1'



Legend	
ZONING	
	Rural
	Environmental Protection
	Extractive Industrial
	Highway Commercial
	Institutional
	Rural Industrial
	Residential One
	Shoreline Residential
	Limited Service Residential
	Open Space
	Major Recreation
	Waste Disposal
Roads	
	Provincial Highway
	Municipal-Year Round Maintained
	Seasonal or Private



This is Schedule 'A-1' to By-law 2010 - \_\_\_\_\_  
Passed this \_\_\_\_ day of \_\_\_\_\_, 2010

Reeve/Mayor \_\_\_\_\_ Clerk \_\_\_\_\_



Note: Islands shall be zoned LSR

Source: MNR NRVIS Data System,  
April 2003

